

# Final TAB Punchlist

Prepared by Jacob Davidson

Dec 23, 2024

## Description

12 tasks in this report.

## Contents

#141 [SITE 500] [NEW] TAB is complete. ....	2
#140 [CURT 501] [NEW] Air curtain power. ....	3
#139 [CURT 503] [NEW] Air curtain door switches. ....	4
#138 [CURT 505] [NEW] Air curtain remote switch installation. ....	5
#137 [DUCT 501] [NEW] Insulation stick pins. ....	6
#136 [UNIT 501] [NEW] Equipment low voltage diagrams. ....	7
#135 [DUCT 502] [NEW] Restroom round exhaust duct insulation. ....	9
#65 [CNTL 509] [NEW] Amerex pull labeling. ....	10
#30 [CNTL 508] [NEW] Controls labeling. ....	12
#27 [UNIT 510] [NEW] Gas inlet grommet. ....	15
#25 [EXHA 510] [NEW] Grease exhaust duct is not supported. ....	16
#24 [EXHA 508] [NEW] Exhaust fan G2 Drip Guard. ....	17

**5774 Burlington (IA) FSU**

241 Legacy Dr, Burlington, Iowa

L1020005774

**#141 [SITE 500] [NEW] TAB is complete.**

**Status**

Open

**Created**

Dec 23, 2024 11:25 AM

[jacobd@nationaltab.com](mailto:jacobd@nationaltab.com)

**Description**

TAB is complete with only non-critical tasks open or all critical/non-critical tasks closed.

---

## #140 [CURT 501] [NEW] Air curtain power.

### Status

Open

### Created

Dec 19, 2024 11:00 AM

[jacobd@nationaltab.com](mailto:jacobd@nationaltab.com)

### Description

Air curtain power does not cycle properly from local disconnect at time of TAB inspection.

### Photos



IMG\_0460

Jacob Davidson

Dec 19, 2024 11:02 AM



IMG\_0461

Jacob Davidson

Dec 19, 2024 11:02 AM

## #139 [CURT 503] [NEW] Air curtain door switches.

### Status

Open

### Created

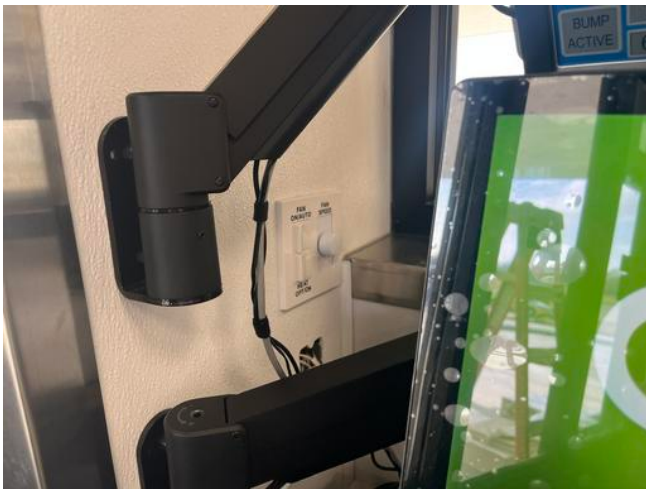
Dec 19, 2024 10:54 AM

[jacobd@nationaltab.com](mailto:jacobd@nationaltab.com)

### Description

Air curtain magnetic door switches are not installed correctly or not properly controlling mode activation in Auto at time of TAB inspection.

### Photos



IMG\_0458

Jacob Davidson

Dec 19, 2024 11:02 AM



IMG\_0459

Jacob Davidson

Dec 19, 2024 11:02 AM

## #138 [CURT 505] [NEW] Air curtain remote switch installation.

### Status

Open

### Created

Dec 19, 2024 10:53 AM

[jacobd@nationaltab.com](mailto:jacobd@nationaltab.com)

### Description

Air curtain remote switches are not installed or do not control curtain functions properly between modes (fan on / auto, heat on / off) at time of TAB inspection.

### Photos



IMG\_0457

Jacob Davidson

Dec 19, 2024 11:03 AM



IMG\_0456

Jacob Davidson

Dec 19, 2024 11:03 AM

# #137 [DUCT 501] [NEW] Insulation stick pins.

Status

Open

Created

Dec 19, 2024 8:56 AM

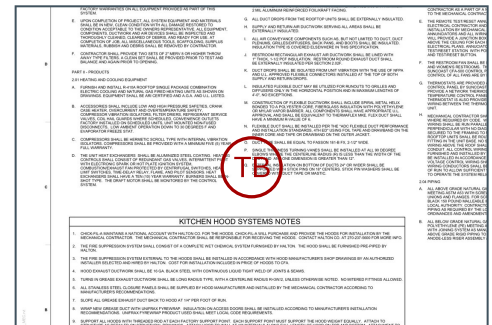
[jacobd@nationaltab.com](mailto:jacobd@nationaltab.com)

Sheet

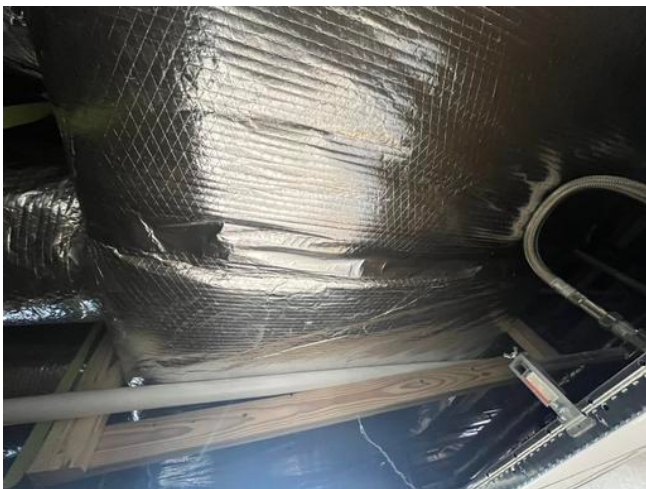
M-001

## Description

External insulation on bottom of ducts 24" or wider is to be supported by stick pins 18" on center. Cut pins and apply tape or mastic over stick pin washers.



## Photos



IMG\_0437

Jacob Davidson

Dec 19, 2024 8:56 AM

**5774 Burlington (IA) FSU**

241 Legacy Dr, Burlington, Iowa

L1020005774

**#136 [UNIT 501] [NEW] Equipment low voltage diagrams**

**Status**

Open

**Created**

Dec 18, 2024 5:41 PM  
jacobd@nationaltab.com

**Sheet**

M-701

**Description**

Equipment missing  
laminated copy of controls  
detail low voltage wiring  
diagrams.



**Photos**



IMG\_0444

Jacob Davidson

Dec 18, 2024 5:43 PM



IMG\_0447

Jacob Davidson

Dec 18, 2024 5:43 PM

## 5774 Burlington (IA) FSU

241 Legacy Dr, Burlington, Iowa

L1020005774



IMG\_0443

**Jacob Davidson**

Dec 18, 2024 5:43 PM

---

# #135 [DUCT 502] [NEW] Restroom round exhaust duct insulation.

Status  
Open

Created  
Dec 18, 2024 5:36 PM  
jacobd@nationaltab.com

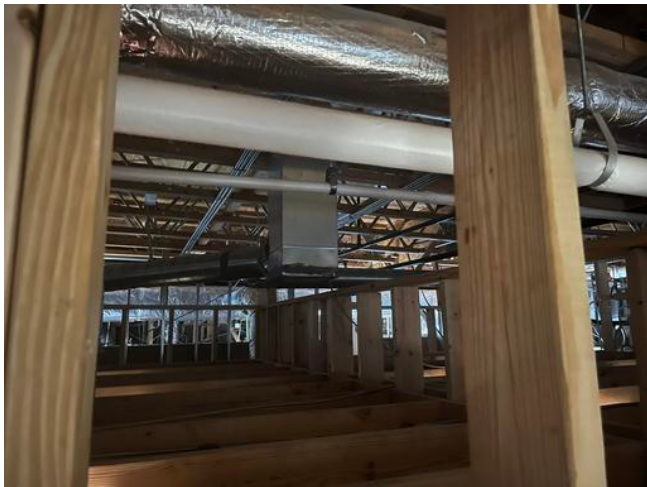
Sheet  
M-001

## Description

Restroom round exhaust duct is to be externally insulated to mitigate noise per mechanical specifications.

DIVISION 15 SPECIFICATIONS		
SECTION	SECTION	SECTION
15-0000	15-0000	15-0000
15-0100	15-0100	15-0100
15-0200	15-0200	15-0200
15-0300	15-0300	15-0300
15-0400	15-0400	15-0400
15-0500	15-0500	15-0500
15-0600	15-0600	15-0600
15-0700	15-0700	15-0700
15-0800	15-0800	15-0800
15-0900	15-0900	15-0900
15-1000	15-1000	15-1000
15-1100	15-1100	15-1100
15-1200	15-1200	15-1200
15-1300	15-1300	15-1300
15-1400	15-1400	15-1400
15-1500	15-1500	15-1500
15-1600	15-1600	15-1600
15-1700	15-1700	15-1700
15-1800	15-1800	15-1800
15-1900	15-1900	15-1900
15-2000	15-2000	15-2000
15-2100	15-2100	15-2100
15-2200	15-2200	15-2200
15-2300	15-2300	15-2300
15-2400	15-2400	15-2400
15-2500	15-2500	15-2500
15-2600	15-2600	15-2600
15-2700	15-2700	15-2700
15-2800	15-2800	15-2800
15-2900	15-2900	15-2900
15-3000	15-3000	15-3000
15-3100	15-3100	15-3100
15-3200	15-3200	15-3200
15-3300	15-3300	15-3300
15-3400	15-3400	15-3400
15-3500	15-3500	15-3500
15-3600	15-3600	15-3600
15-3700	15-3700	15-3700
15-3800	15-3800	15-3800
15-3900	15-3900	15-3900
15-4000	15-4000	15-4000
15-4100	15-4100	15-4100
15-4200	15-4200	15-4200
15-4300	15-4300	15-4300
15-4400	15-4400	15-4400
15-4500	15-4500	15-4500
15-4600	15-4600	15-4600
15-4700	15-4700	15-4700
15-4800	15-4800	15-4800
15-4900	15-4900	15-4900
15-5000	15-5000	15-5000

## Photos



IMG\_0439  
Jacob Davidson  
Dec 18, 2024 5:38 PM

## #65 [CNTL 509] [NEW] Amerex pull labeling.

### Status

Open

### Created

Dec 18, 2024 9:56 AM

[jacobd@nationaltab.com](mailto:jacobd@nationaltab.com)

### Description

Label all Amerex pull stations for which hoods they serve. Per M-201 detail 1, label should be red bakelite label with 1/4" high white lettering indicating which hoods served.

### Photos



IMG\_0451

Jacob Davidson

Dec 19, 2024 10:42 AM



IMG\_0450

Jacob Davidson

Dec 19, 2024 10:42 AM

**5774 Burlington (IA) FSU**

241 Legacy Dr, Burlington, Iowa

L1020005774



IMG\_0436

**Jacob Davidson**

Dec 18, 2024 5:38 PM



IMG\_0435

**Jacob Davidson**

Dec 18, 2024 5:38 PM

**5774 Burlington (IA) FSU**

241 Legacy Dr, Burlington, Iowa

L1020005774

**#30 [CNTL 508] [NEW] Controls labeling.**

**Status**

Open

**Created**

Dec 16, 2024 3:51 PM

[jacobd@nationaltab.com](mailto:jacobd@nationaltab.com)

**Description**

Label all sensors, humidistats, thermostats, smoke annunciators and remote space mounted OADs, MODs, VFD's for which piece of equipment they serve.

**Photos**



IMG\_0349

**Jacob Davidson**

Dec 16, 2024 3:59 PM



IMG\_0348

**Jacob Davidson**

Dec 16, 2024 3:59 PM

**5774 Burlington (IA) FSU**

241 Legacy Dr, Burlington, Iowa

L1020005774



IMG\_0350

**Jacob Davidson**

Dec 16, 2024 3:59 PM



IMG\_0346

**Jacob Davidson**

Dec 16, 2024 3:59 PM

**5774 Burlington (IA) FSU**

241 Legacy Dr, Burlington, Iowa

L1020005774



IMG\_0374

**Jacob Davidson**

Dec 16, 2024 3:59 PM

---

**5774 Burlington (IA) FSU**

241 Legacy Dr, Burlington, Iowa

L1020005774

**#27 [UNIT 510] [NEW] Gas inlet grommet.**

**Status**

Open

**Created**

Dec 16, 2024 3:48 PM

[jacobd@nationaltab.com](mailto:jacobd@nationaltab.com)

**Description**

AC gas inlet grommet is missing at the gas line/RTU penetration point on AC1 and AC3

**Photos**



IMG\_0357

**Jacob Davidson**

Dec 16, 2024 4:00 PM



IMG\_0355

**Jacob Davidson**

Dec 16, 2024 4:00 PM

**5774 Burlington (IA) FSU**

241 Legacy Dr, Burlington, Iowa

L1020005774

**#25 [EXHA 510] [NEW] Grease exhaust duct is not supported.**

**Status**

Open

**Created**

Dec 16, 2024 3:45 PM

[jacobd@nationaltab.com](mailto:jacobd@nationaltab.com)

**Description**

Exhaust duct is to be supported per kitchen hood exhaust fan detail on 6'0" centers and at each drop into the space.

**Comments**

Stands are on order.

Jacob Davidson Dec 19, 2024

**Photos**



IMG\_0353

Jacob Davidson

Dec 16, 2024 4:00 PM



IMG\_0354

Jacob Davidson

Dec 16, 2024 4:00 PM

**5774 Burlington (IA) FSU**

241 Legacy Dr, Burlington, Iowa

L1020005774

**#24 [EXHA 508] [NEW] Exhaust fan G2 Drip Guard**

**Status**

Open

**Created**

Dec 16, 2024 3:40 PM

[jacobd@nationaltab.com](mailto:jacobd@nationaltab.com)

**Description**

Exhaust fan G2 Drip Guard is missing.

**Photos**



IMG\_0351

**Jacob Davidson**

Dec 16, 2024 4:01 PM



IMG\_0352

**Jacob Davidson**

Dec 16, 2024 4:01 PM